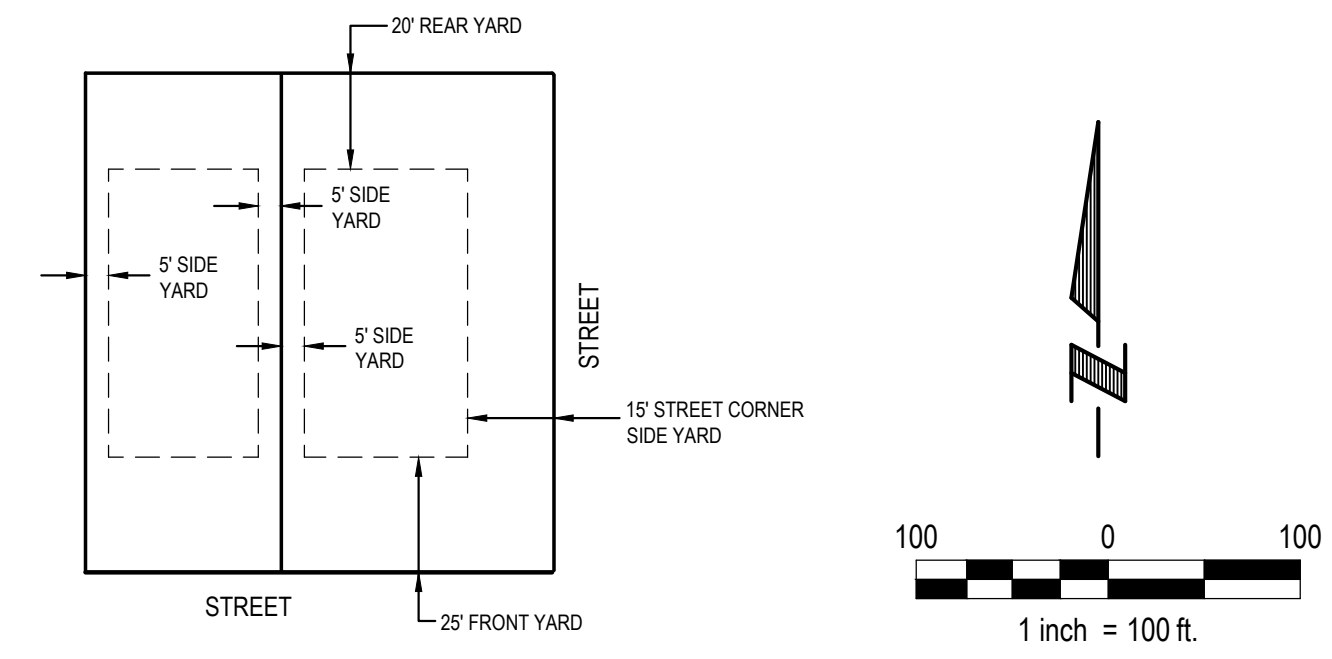


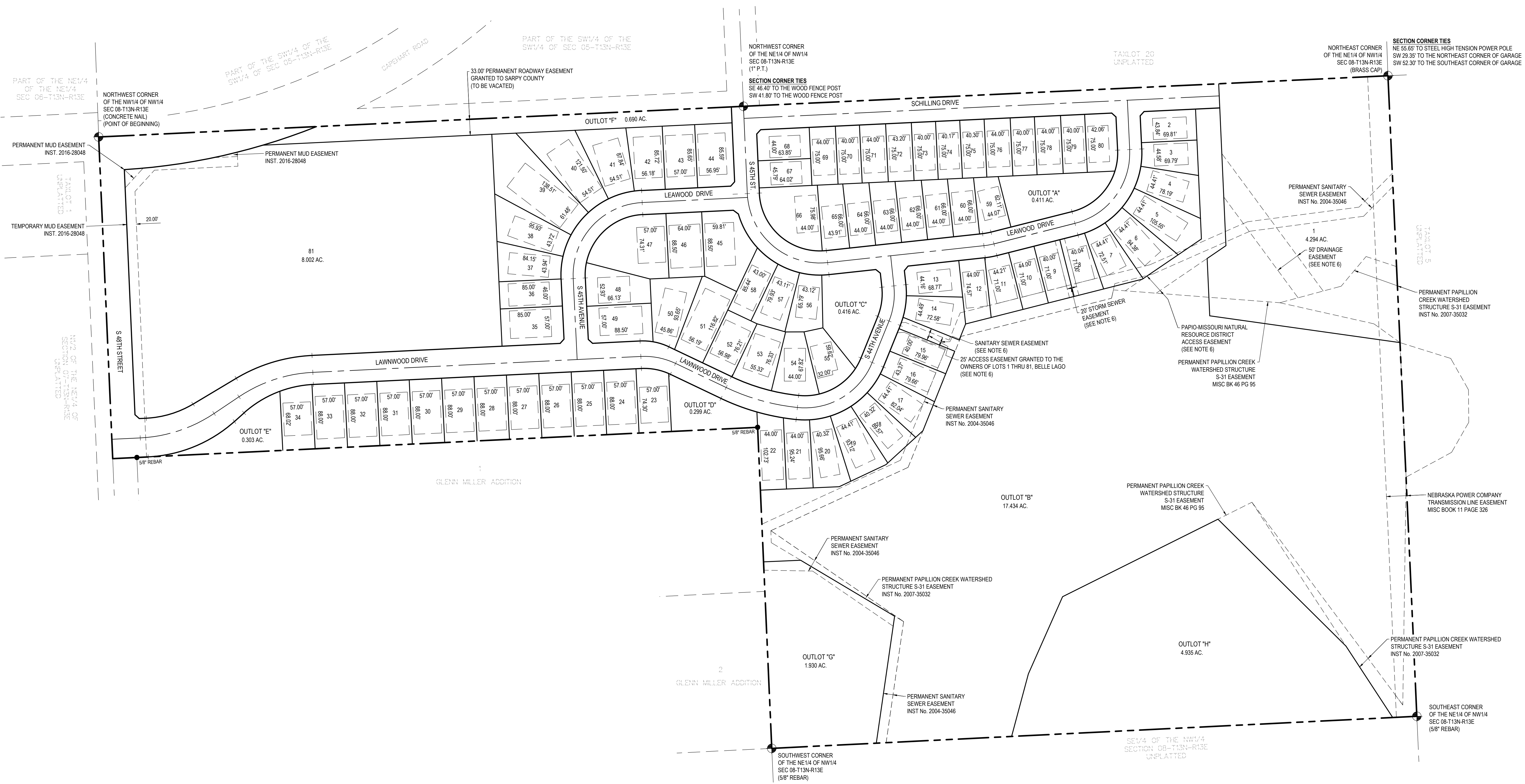
BELLE LAGO

LOTS 1 THRU 81 & OUTLOTS "A" THRU "H" INCLUSIVE

A TRACT OF LAND LOCATED IN PART OF TAX LOT 14 AND TAX LOT 15, TAX LOTS LOCATED IN PART OF THE NW1/4 OF THE NW1/4 AND PART OF THE NE1/4 OF THE NW1/4, ALL LOCATED IN SECTION 08, TOWNSHIP 13 NORTH, RANGE 13 EAST OF THE 6TH P.M., SARPY COUNTY, NEBRASKA.



RG-50-PS ZONING SETBACK REQUIREMENTS (LOTS 2 THRU 80 & OUTLOTS "A" THRU "H")



Revisions	Date	Description
1	11/03/2017	MMW
2		THH

Drawn By: THH
 Scale: 1" = 100'
 Sheet: 1 of 1
 Terry Hansen